

HEPL Handbook



A practical guide to study at HEPL
and to live in Liège

University College of the Province of Liège



Index

1	A practical guide to study at HEPL and to live in Liège	0
1	2. ERG Exchange - contact.....	5
1.1	Institution	5
1.2	Erasmus coordinator	5
1.3	International office.....	5
2	ERG Exchange program.....	6
2.1	General description	6
2.2	Program.....	6
2.3	Goals / learning Outcomes	6
2.4	Organization	7
2.5	Assessment strategy	7
2.6	ECTS per module : section	8
2.7	block schedule per week	15
2.8	Info on clinical placement / everything (Uniforms, shoes, badge).....	15
2.9	Health certificate / required vaccination.....	17
3	Partnerships	17
3.1	UNIGreen	17
3.2	The main objectives of UNIGreen.....	17
3.3	Mobility of students and staff.....	18
3.4	Current UNIGreen partners.....	18
3.5	Contact.....	19
4	Belgium in brief	19
4.1	Belgium 	19
4.2	Official websites	19
4.3	Education in Wallonia	20
4.4	The academic calendar of studies in French-speaking Belgium.....	21
4.5	Airports and station near Liège	21
4.5.1	Airports and Stations.....	21
4.5.2	How to reach HEPL from:	22
4.5.2.1	Brussels Airport.....	22
4.5.2.2	Brussels South Charleroi Airport.....	22



4.5.2.3	Liège Airport	22
5	Studying at University College of the Province de Liège – HEPL	23
5.1	Academic calendar	23
5.2	Welcome weeks	23
5.3	Application	23
5.3.1	Application Deadline	23
5.3.2	How to proceed?	23
5.3.2.1	Students from European countries:	23
5.3.2.2	Students from non-European countries	24
5.4	Location and accessibility	25
5.4.1	Maison Erasmus – Jemeppe	25
5.4.1.1	Location	25
5.4.1.2	Access	25
5.4.2	Main campus : Campus 2000	26
5.4.2.1	Studies	26
5.4.2.2	Location	26
5.4.2.3	Access	26
5.4.3	Campus Barbou – Liège	27
5.4.3.1	Studies	27
5.4.3.2	Location	27
5.4.3.3	Access	27
5.4.4	Campus Beeckman – Liège	27
5.4.4.1	Studies	27
5.4.4.2	Location	27
5.4.4.3	Access	27
5.4.5	Campus Gloesener – Liège	28
5.4.5.1	Studies	28
5.4.5.2	Location	28
5.4.5.3	Access	28
5.4.6	Campus La Reid	29
5.4.6.1	Studies	29
5.4.6.2	Location	29



5.4.6.3	Access.....	29
5.4.7	Campus Parc des marêts – Seraing	29
5.4.7.1	Studies.....	29
5.4.7.2	Location	29
5.4.7.3	Access.....	29
5.4.8	Campus Verviers	30
5.4.8.1	Studies.....	30
5.4.8.2	Location	30
5.4.8.3	Access.....	30
5.4.9	Site Avroy – Liège.....	31
5.4.9.1	Studies.....	31
5.4.9.2	Location	31
5.4.9.3	Access.....	31
5.5	Disability services	31
5.6	Erasmus House.....	32
5.6.1	Contact and registration.....	32
5.6.2	Arrival at Erasmus House	32
5.6.3	Location	32
5.6.4	Equipment	32
5.6.5	Communal areas.....	32
5.6.6	Costs and rooms	33
5.6.6.1	Single Room.....	33
5.6.6.2	Single Room with shared bathroom.....	33
5.7	Wifi	33
5.8	ESN HEPL	33
5.9	Sport.....	33
5.10	Contact	34
5.10.1	Department of « Agronomic Sciences »	34
5.10.2	Department of "Health Sciences"	34
5.10.3	Department of "Motricity Sciences"	34
5.10.4	Department of "Sciences and Techniques"	35
5.10.5	Department of "Economic and Legal Sciences".....	35



5.10.6	Department of "Psychological Sciences and Education"	35
5.10.7	Department of "Social Sciences and Communication"	36
5.10.8	Central Office	36
6	Living in Liège	37
6.1	Liège	37
6.2	Visas	38
6.3	Housing	38
6.4	Health Insurance and Health Care	39
6.5	Mobile phone service	39
6.6	Opening a bank account.....	40
6.7	Shopping for food and groceries.....	40
6.8	Monthly budget	40
6.9	Transportation	41
6.9.1	Bus.....	41
6.9.2	Bike.....	41
6.9.3	Train	41
6.9.4	Boat	42
6.9.5	Carpooling	42
6.10	Traveling outside of Liège	42
6.11	Culture in Liège	42



1 2. ERG Exchange - contact

1.1 Institution

Haute École de la Province de Liège (HEPL)

Administrative address: Quai des Carmes 45, 4101 Seraing

Functional address for the health department : Quai du Barbou 2 4020 Liège

ERASMUS Code : B LIEGE 38

Website : <https://www.hepl.be/fr>

1.2 Erasmus coordinator

HOEBEKE Lionel : International relations manager for the department of health sciences

Mail address : lionel.hoebeke@hepl.be

1.3 International office

LAMOUREUX Morgane : Relationship and Strategic Head of International Office

Mail address : morgane.lamoureux@hepl.be

BACQUELAINE Pauline : Administrative and Economic Head of International Office

Mail address : Pauline.bacquelaine@provincedeliege.be

Main address : bri@hepl.be



2 ERG Exchange program

2.1 General description

HEPL became a member of the Erasmus Radiography Group in 2022. Our institution has been training professionals in the field of medical imaging for more than 20 years. The Bachelor -Technologist training in medical imaging allows you to acquire theoretical skills but also technical abilities such as precision, caution, versatility, adaptability and safety.

Combining theory and practice, the courses are taught in small groups by teachers active in medical imaging services and professors who are experts in their field.

2.2 Program

The program is explained in detail in point 3.6

2.3 Goals / learning Outcomes

Learning objectives :

Make medical imaging technologists aware of oncology and train them in a field in which the University Hospital Center of Liège is a forerunner.

Theoretical / academic outcomes:

This training aims to improve the care and services offered to people with cancer and their loved ones in medical imaging, to optimize the role of medical imaging technologists and to standardize their practices.

Clinical / practical outcomes:

Prepare medical imaging technologists for oncology-specific techniques.

Prepares medical imaging technologists for the notion of multidisciplinary and networked work.

- Make technologists aware of the specific role of cancer screening.
- The morphological and functional evaluation of patients notions of oncological radio anatomy.
- The doctor/patient relationship involving the radiologist.
- Sensitization of medical imaging technologists to modern and innovative techniques in radio oncology.

Culture and language outcomes:

- Sensitize students to the organization of the health care system in Belgium.



2.4 Organization

COUCHE Anne : Pedagogical coordination for the MIT program

Mail address : Anne.couche@hepl.be

2.5 Assessment strategy

theoretical / academic:

- Resolution cases based on clinical judgment in English for theoretical aspects before going on internship.

clinical / practical:

- Internship evaluation by teacher or directly via the services.

ECTS Grading scale:

Echelle de notation ECTS de la HEPL			
Notes ECTS	Définition	Note	Note HEPL pour étudiants Erasmus OUT
A	EXCELLENT - EXELLENT	17,1 à 20	18,00
B	TRES BIEN - VERY GOOD	15,1 à 17	16,00
C	BIEN - GOOD	13,1 à 15	14,00
D	SATISFAISANT SUFFICIENT	11,1 à 13	12,00
E	PASSABLE - PASSABLE	10 à 11	11,00
FX	INSUFFISANT - FAILED	note < 10/20	8,50
F	INSUFFISANT - FAILED	note < 7/20	5



2.6 ECTS per module : section

The module includes 8 ECTS of courses and 12 ECTS of clinical placements.

Theoretical aspects (8 ECTS) :

The health system in Belgium (0.5 ECTS)

General objective:

Understand the functioning of the healthcare system in Belgium, including its structures, its main actors, its financing, and its current challenges.

Content :

Introduction to the Belgian healthcare system

Definition and main characteristics:

Brief history of the healthcare system in Belgium:

Structure of the health care system:

Key players in the health care system

Healthcare providers:

Patients:

Institutions and regulatory bodies:

Healthcare financing in Belgium

The role of mutual societies:

Health expenses

Current challenges and future prospects

Medical French Course (0.5 ECTS)

General objective :

Allow foreign medical imaging students to acquire the language skills necessary to communicate effectively in a professional healthcare context in Belgium, focusing on medical vocabulary, interactions with patients and colleagues.

Content :

Basic medical vocabulary



Anatomy: body parts, organ systems.

Common medical terms

Interacting with patients: common expressions

Polite and welcoming expressions.

Phrases for asking patients questions

Dialogue simulation: treatment of a patient in medical imaging

Communication with colleagues

Generalities in oncology (3 ECTS)

General objective:

Provide medical imaging students with an in-depth understanding of key aspects of oncology, including epidemiology, prevention, treatment, advanced care, caring, pharmacology, radiation protection, and oncology research .

Content :

Introduction to Oncology and Epidemiology

Introduction to Oncology

Definition of oncology.

Role of medical imaging professionals in the oncology care pathway.

Epidemiology of cancers

Global and national cancer statistics.

Risk factors: genetic, environmental, behavioral.

Most common types of cancers and their distribution.

Impact of epidemiology on imaging practices

Prevention and Screening

Primary, secondary and tertiary prevention

Cancer prevention measures: health promotion, vaccinations, reduction of exposure to carcinogens.



Importance of early detection: mammography, scanner, MRI, etc.

Role of medical imaging in screening

Imaging techniques for screening the most common cancers.

Interpretation of images in a screening context.

Advanced Oncology Treatment and Care

Cancer treatment options

Surgery, radiotherapy, chemotherapy, immunotherapy, targeted therapies.

Role of imaging in treatment monitoring.

Advanced oncology care

Palliative care and pain management.

Supportive care: nutrition, psycho-oncology.

Monitoring of patients under treatment

Use of imaging to assess treatment effectiveness.

Adaptation of protocols based on imaging results.

Helpful relationship with the patient

Communication and psychological support

Active listening, empathy, and communication with the cancer patient.

Psychological impact of diagnosis and treatment: emotional support.

Helping relationship techniques for imaging professionals

Approach when acquiring images that are stressful or painful for the patient.

Managing patient stress and anxiety

Pharmacology and Radioprotection

Pharmacology in oncology



Drugs used in chemotherapy, targeted therapies, and immunotherapies.

Side effects of drug treatments and impact on imaging examinations.

Radiation protection

Principles of radiation protection for patients and medical personnel.

Safety practices when using radiation in imaging.

Radiation protection regulations and their application in oncology.

Oncology Research

Recent advances in oncology research

Innovations in imaging diagnosis.

New therapeutic approaches and their impact on medical imaging.

Contribution of medical imaging to oncology research

Participation in clinical trials: role of imaging in the evaluation of new therapies.

Current research projects in oncology and imaging.

Oncological Imaging (4 ECTS)

General objective:

Provide students with in-depth and practical knowledge of oncological imaging techniques, adapted radioanatomy, and image interpretation for the different modalities used in oncology.

Content :

Conventional imaging in oncology

Rx, CT, and MRI Imaging Techniques

Radiography (Rx) in oncology

Basic principles and use in oncology.

Indications for different types of cancers.



Interpretation of oncological radiographic images.

Practical cases: identification of bone lesions, lung masses, etc.

Computed tomography (CT) in oncology

Use of CT for the diagnosis and monitoring of cancers.

Contrast protocols in oncology.

Advanced techniques: multiphase CT, 3D reconstruction.

Interpretation of images: detection of metastases, tumor assessment.

Magnetic resonance imaging (MRI) in oncology

Advantages of MRI in the evaluation of tumors.

Specific protocols for brain, abdominal and breast tumors.

Advanced techniques: diffusion, perfusion, spectroscopy.

Interpretation of MRI images: diagnostic and follow-up criteria.

Radioanatomy adapted to oncology

Thoracic and abdominal radioanatomy

Normal anatomy and anatomical variations.

Tumor-induced anatomical changes.

Identification of key structures for oncological diagnosis.

Cerebral and musculoskeletal radioanatomy

Anatomy of the brain and musculoskeletal structures in oncology.

Identification of tumors and metastases.

Interpretation of imaging in radiation oncology

Basic principles of radiation oncology

Role of imaging in planning and monitoring treatment in radiation oncology.

Image fusion techniques: CT, MRI, PET-CT.



Interventional imaging in oncology

Principles and techniques of interventional oncological imaging

Role of imaging in interventional procedures: biopsies, drainages, ablations, vascular procedures (embolization, etc.)

Modalities used: ultrasound, CT, MRI, interventional radiology

Clinical applications in oncology

Image-guided techniques for tumor biopsy.

Percutaneous tumor ablation: radiofrequency, cryoablation.

Management of complications and post-interventional follow-up

Identification and treatment of complications.

Follow-up by imaging after intervention: criteria for success and failure.

Breast imaging

Breast imaging techniques

Mammography: indications, techniques, and diagnostic criteria.

Breast ultrasound: complement to mammography.

Breast MRI: indications and interpretation.

Tomosynthesis: advantages and limitations.

Diagnosis and screening of breast cancer

Interpretation of images: identification of masses, microcalcifications, architectural distortions.

Use of BI-RADS systems for reporting results.

Clinical cases: analysis of images of breast cancers at different stages.

Post-therapeutic follow-up in breast imaging

Monitoring after surgery and radiotherapy.



Identification of local recurrences and side effects of treatment.

Radiotherapy in oncology

Physical principles of radiotherapy.

Types of radiotherapy: external, internal (brachytherapy), image-guided systems.

Radiotherapy planning

Planning process: image acquisition, delineation of target volumes.

Advanced techniques: conformal radiotherapy, IMRT (Intensity Modulated Radiotherapy).

CyberKnife and new technologies in radiotherapy

CyberKnife: Principles and use

CyberKnife features: precision, robotic guidance.

Specific indications in oncology: brain, pulmonary, spinal tumors.

Clinical cases: analysis of treatments carried out with CyberKnife.

New technologies in radiotherapy

Stereotactic body radiotherapy (SBRT).

Real-time adaptation techniques (Adaptive RT).

Respiratory modulation techniques.

Post-radiotherapy follow-up

Post-radiotherapy follow-up imaging

Imaging techniques for assessing treatment response.

Identification of late complications.

Nuclear medicine: oncological specificities

Principles of nuclear medicine in oncology

Basics of nuclear medicine: radioisotopes, gamma cameras, PET.

Specific applications in oncology: detection and monitoring of cancers.



Nuclear imaging techniques in oncology

PET-CT and PET-MRI: indications, protocols, and image interpretation.

Bone scintigraphy: role in the detection of bone metastases.

Interpretation of images in nuclear medicine

Malignancy criteria on nuclear medicine images.

Integration of nuclear imaging results into therapeutic planning.

Clinical Judgement

General objective:

The student will be able to use the knowledge learned during the previous courses

Content :

Analysis of clinical cases with interpretation of images and discussion of results in an oncological context.

2.7 block schedule per week

Course weeks run from Monday to Friday. The days are divided into two-hour blocks and are organized as follows:

- ➔ 8:15 a.m.-10:15 a.m.
- ➔ 10:30 a.m.-12:30 p.m.
- ➔ 1:30 p.m.-3:30 p.m.
- ➔ 3:45 p.m.-5:45 p.m.

Not all class times will be occupied. Students will receive a course schedule.

Students may need to change locations between classes.

2.8 Info on clinical placement / everything (Uniforms, shoes, badge)

Most internships will take place at the Liege University Hospital in the integrated oncology center.

Further informations : [ONCOLOGY CHU LIEGE](#)



Clinical internships will be distributed as follows:

- Mammography (1 week)
- University radiotherapy service (2 weeks)
- Nuclear medicine department (2 weeks at Pet CT)
- Scanner service (2 weeks)

It will be possible to adapt the internship terms according to your request.

Visits :

- Visit IBA (<https://www.iba-worldwide.com/>) (1 day)
- Medical mammography workshop (1 day)
- Participation in the "Imagésanté" festival 1 year/2 (1 day)
- Participation in conference-type workshops presented by partner firms

Outfit for clinical placements :

- The student must provide a hospital uniform at their own expense (jacket + pants). The student may use the internship uniform of his regular school.
- The student cannot wear his uniform outside the hospital and cannot use it outside of the internship services.
- The student is responsible for the cleanliness of his uniform.
- The student must provide at their own expense, closed shoes without heels or white sneakers, reserved for the clinical placement.
- Dosimeter: to be worn visibly at chest height. It is provided by HEPL

You will need to collect your dosimeter from the secretariat on the 3rd floor BEFORE the start of the course and return it as soon as possible at the end of the course. It is important to immediately report any loss or damage to a dosimeter. You cannot keep your dosimeter for more than a month. A dosimeter is very expensive, so we ask you to pay particular attention to it...

- Pen + scissors:!!!!!! In MRI, nothing metallic in the pockets
- Notebook with doses (KV, mAs, positioning) of the different examinations
- No mobile phone during training hours

- The wearing of jewelry is prohibited except a watch. (the watch is prohibited in MRI due to magnetic field)
- Nails should be short and clean. nail polish is strictly prohibited

2.9 Health certificate / required vaccination

Students must have a medical examination in order. They must be able to practice the profession of medical imaging technologist.

They must be in order of vaccination against hepatitis B and C.

Students in the Department of Health Sciences visiting the patient's bedside are advised to take out personal professional insurance.

3 Partnerships

3.1 UNIGreen

In 2022, HEPL joined **UNIGreen**, a network of European higher education partners sharing a common desire: **to create a “green” European university specializing in the fields of agriculture, biotechnologies and life sciences.**

A European university that aims to provide its students with the skills needed to become agents of the transition to a climate-neutral economy!

3.2 The main objectives of UNIGreen

- **Provide up-to-date scientific information and a technological framework** to train, upskill, retrain and empower current and future professionals and experts in the field of sustainable agriculture, green biotechnology and environmental and life sciences.
- **Co-create and test innovative solutions** to improve local and regional development.
- **Support the transition of students** to international job markets, integrate green practices into them and inspire education and training institutions around the world to think and act green.



- **provide inclusive and mixed education** in an environment based on the principles of equality and diversity.

To achieve its objectives, UNIgreen implements a series of interdependent actions:

- **a student-centered educational model** that offers flexible learning, a common approach to micro-degrees, and innovative teaching and learning methodologies. A joint Master's degree is also organized by the various partners
- **a virtual campus** , a high-performance, quality, inclusive and sustainable digital space for the entire UNIgreen academic community
- **the UNIgreen International Doctoral School** which promotes, organizes and supervises UNIgreen jointly supervised theses. Doctoral students carry out their research activities within the UNIgreen Joint Research Centre and specialized research units.

3.3 Mobility of students and staff

In order to promote exchanges, UNIgreen works to reduce obstacles to student and staff mobility , and organises joint mobility programmes:

- “Welcome Weeks” to integrate students on site
- “Buddy program” to connect foreign students with local students
- “Erasmus 4 All” campaign that promotes the mobility opportunities offered by UNIgreen within the framework of the Erasmus+ programme, with the aim of meeting the needs of students and staff by reducing the barriers to their participation in mobility.

3.4 Current UNIgreen partners



- University of Almería – Spain
- Agricultural University of Iceland – Islande
- Agricultural University of Plovdiv – Bulgarie
- Polytechnic Institute of Coimbra – Portugal
- Paris Sup'Biotech – France
- University of Modena and Reggio Emilia - Italy
- Warsaw University of Life Sciences - Pologne
- Higher Education School of the Province of Liège – Belgique



3.5 Contact

UNIGreen project coordinator

Quai des Carmes 45 - 4101 Jemeppe-sur-Meuse

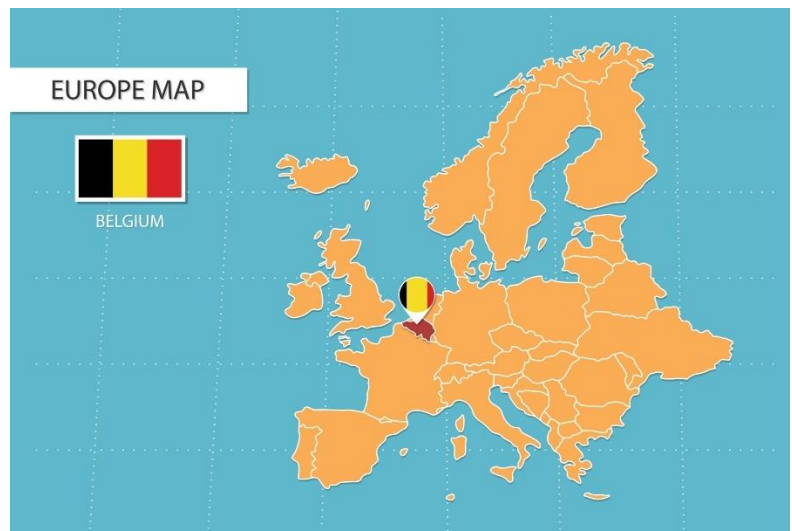
unigreen@hepl.be

<https://unigreen-alliance.eu/>

4 Belgium in brief

4.1 Belgium

A little country of 11,5 million inhabitants and 30,000 km², Belgium is surrounded by France, Luxembourg, Netherland and Germany. Wallonia (the French speaking part region), Flanders (Dutch speaking part region) and Bruxelles-Capitale make up the three regions of the federal state. Split up by a dense network of motorways and railways, Belgium borders the North Sea for around 66km. Brussels, capital of Belgium, is home to the headquarters of the European Union and NATO.



4.2 Official websites

Official website of the federal state: <https://www.belgium.be/en>

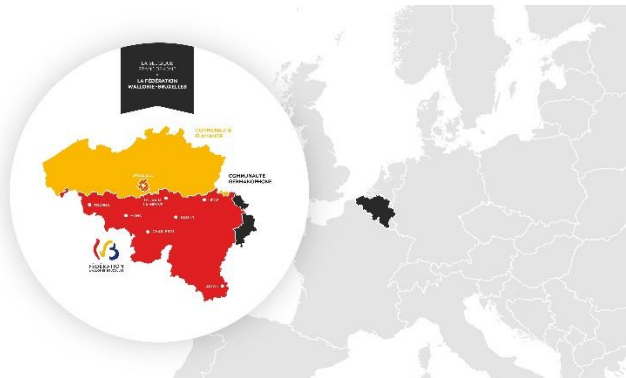
¹<https://fr.vecteezy.com/art-vectoriel/15706193-carte-de-la-belgique-en-europe-icomes-indiquant-l-emplacement-de-la-belgique-et-les-drapeaux>



Official website for the Tourism Office of Wallonia: <https://visitwallonia.com/>

Official website for the Tourism Office of Liège: <https://www.visitezliege.be/en>

4.3 Education in Wallonia



Official website: <https://www.studyinbelgium.be/en>

The landscape of higher education in French-speaking Belgium is divided into universities, university colleges, and schools of arts.

The network of higher education institutions of the Wallonia-Brussels Federation numbers:

- 5 universities
- 19 university colleges
- 16 schools of arts

Belgian higher education has three goals:

- teaching;
- research;
- service to the community.

By choosing to study at a French-speaking university college, you have multiple education offers:

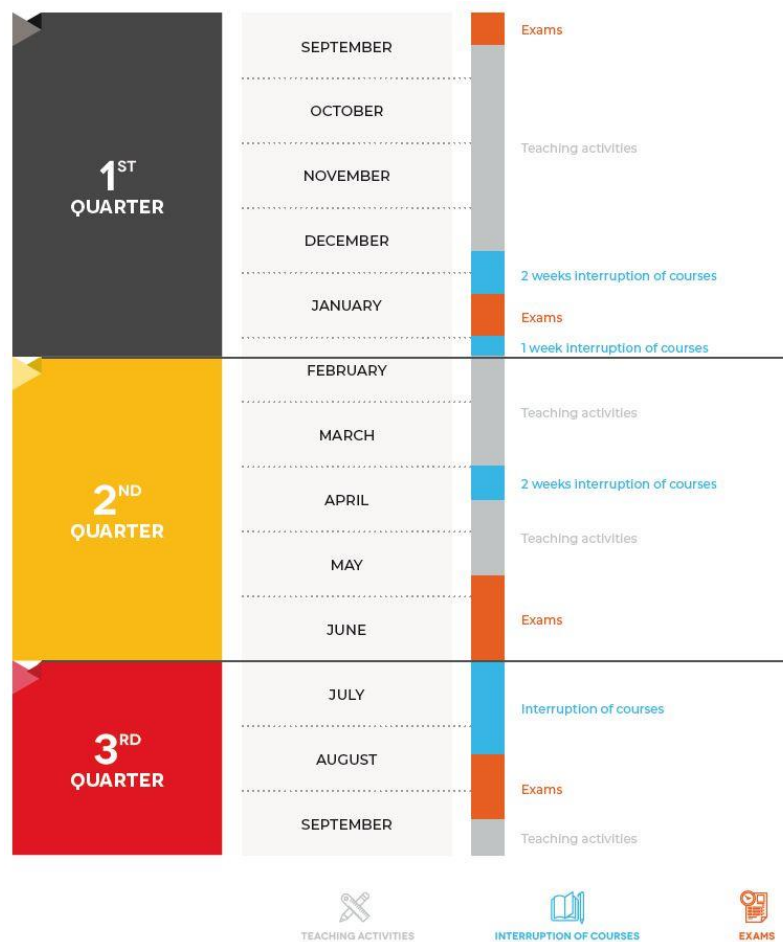
- Studies organised as a single cycle, leading to a professional bachelor's degree (between 180 and 240 ECTS credits).
- Studies organised into two cycles, leading to an academic **bachelor's degree** (1st cycle - 180 ECTS credits) and **master's** (2nd cycle - 60 to 120 ECTS credits).

² See in: Studyin Belgium: <https://www.studyinbelgium.be/fr/la-belgique-une-situation-ideale-au-coeur-de-leurope>



- Studies leading to a advanced Bachelor’s degree. This can be obtained after having successfully completed an initial bachelor’s or master’s degree. The advanced bachelor’s degree contains at least 60 credits.

4.4 The academic calendar of studies in French-speaking Belgium



4.5 Airports and station near Liège

4.5.1 Airports and Stations

- Brussels Airport : BRU - <https://www.brusselsairport.be/fr/passengers>
- Brussels South Charleroi Airport – CRL - <https://www.brussels-charleroi-airport.com/fr>
- Liège Airport - LGG - <https://www.liegeairport.com>

³ See in: Study in Belgium - <https://www.studyinbelgium.be/en/academic-calendar-studies-french-speaking-belgium>



- Liège Guillemins Station

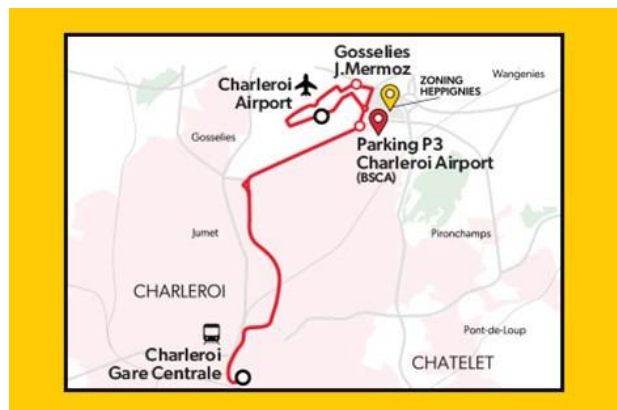
4.5.2 How to reach HEPL from:

4.5.2.1 Brussels Airport

You can reach HEPL with train from Zaventem to Liège Guillemins (change in Leuven). Buy a ticket here: <https://www.belgiantrain.be/en>

4.5.2.2 Brussels South Charleroi Airport

1. You can use the direct line from Flico.com to Liège and buy your ticket here: <https://www.flibco.com/en>
2. You can use the bus line A1 to reach "Charleroi Gare central". And then take the train to Guillemins Station, buy your ticket here: <https://www.belgiantrain.be/en>



4.5.2.3 Liège Airport

You can take the bus to the city center or to Guillemins Station:

- Number 53 – Saint Lambert, Jemeppe-sur-Meuse :
- Number 57 – Guillemins Station
- Number 85 – Huy

You can find the schedule here: <https://www.letec.be/>

5 Studying at University College of the Province de Liège – HEPL

5.1 Academic calendar

Fall semester: From 16th of September to 31st of January.

Spring semester: From 3rd of February to 30th of June.

Bank holidays: September 27, 2024 - November 1, 2024 – November 11, 2024 – January 1, 2025 – April 21, 2025 - May 1, 2025 – May 29, 2025 – June 9, 2025

Fall holidays: October 28 to November 1, 2024

Winter holidays: from December 23, 2024, to January 3, 2025

Carnival holidays: from March 3, 2025, to March 7, 2025

Spring holidays: from April 28, 2025, to May 9, 2025

5.2 Welcome weeks

Fall semester: From Monday 9th of September to Friday 13th of September.

Spring semester: Monday 3rd of February and Tuesday 4th of February.

5.3 Application

5.3.1 Application Deadline

Fall semester: 1st of June

Spring semester: 1st of December

5.3.2 How to proceed?

5.3.2.1 Students from European countries:

Courses:

1. Online Learning Agreement: <https://learning-agreement.eu/>
Attention: You have to choose “Province de Liège” B LIEGE 38
2. A copy of ID CARD or passport
→ Contact your [coordinator](#) and send the ID card or passport.

Training:

1. Download the Learning Agreement on our website: - <http://www.provincedeliege.be/en/art1437>
2. A copy of ID CARD or passport
3. Send both documents to your coordinator: See “[Contacts](#)”.



5.3.2.2 [Students from non-European countries](#)

Courses:

1. Download the Learning Agreement on our website: - <http://www.provincedeliege.be/en/art1437>
2. A copy of ID CARD or passport
3. Send both documents to your coordinator: See "[Contacts](#)".

Training:

1. Download the Learning Agreement on our website: - <http://www.provincedeliege.be/en/art1437>
2. A copy of ID CARD or passport
3. Send both documents to your coordinator: See "[Contacts](#)".



5.4 Location and accessibility

5.4.1 Maison Erasmus – Jemeppe

5.4.1.1 Location



Quai des Carmes, 45 – 4101 Jemeppe-sur-Meuse

360° View : <https://static01.provincedeliege.be/hepl-campus/Maison-Erasmus/>

5.4.1.2 Access

Bus: Numbers 2, 3, 15, 22, 27, 32, 40, 41, 45, 46, 47, 53, 56, 86, 111. They stop near campus 2000. The names of these stops are « Rue du Gosson », « Hôtel de ville » or « Gare routière ».

Train: The name of the station is « Pont de Seraing », and it takes less than 10 minutes by foot. It takes about 10 minutes from the main station « Liège-Guillemins ».



5.4.2 Main campus : Campus 2000

5.4.2.1 Studies

- Department of "Economic and Legal Sciences"
- Department of "Psychological Sciences and Education"
- Department of "Social Sciences and Communication"

5.4.2.2 Location



Avenue Montesquieu, 6 – 4101 Jemeppe-sur-Meuse

<https://www.hepl.be/fr/campus/campus-2000>

5.4.2.3 Access

Bus: Numbers 2, 3, 15, 22, 27, 32, 40, 41, 45, 46, 47, 53, 56, 86, 111. They stop near campus 2000. The names of these stops are « Rue du Gosson », « Hôtel de ville » or « Gare routière ».

Train: The name of the station is "Pont de Seraing", and it takes less than 10 minutes by foot. It takes about 10 minutes from the main station "Liège-Guillemins".

Parking: The campus is equipped with a parking for bicycles.



5.4.3 Campus Barbou – Liège

5.4.3.1 Studies

- Department of "Motricity Sciences"
- Department of "Health Sciences"

5.4.3.2 Location

Quai du Barbou, 2 – 4020 Liège - <https://www.hepl.be/fr/campus/barbou>



5.4.3.3 Access

Bus : Numbers 1, 4, 60 et 76

Train: The name of the station is "Liège Saint-Lambert".

Parking: The campus is equipped with a parking for bicycles.

5.4.4 Campus Beeckman – Liège

5.4.4.1 Studies

- Department of "Psychological Sciences and Education"

5.4.4.2 Location

Rue Beeckman, 19 – 4000 Liège : <https://www.hepl.be/fr/campus/beeckman>

5.4.4.3 Access

Bus: 1, 20, 21, 22, 23, 25, 27, 30, 48, 64, 65, 90, 94, 377. The names of the stops are "Rue Fusch" et "Charlemagne"

Train: The name of the stations are "Liège Guillemins" and "Liège-Saint-Lambert".



5.4.5 Campus Gloesener – Liège

5.4.5.1 Studies

- Department of "Sciences and Techniques"
- Department of "Motricity Sciences"

5.4.5.2 Location



Quai Gloesener, 6 – 4020 Liège : <https://www.hepl.be/fr/campus/gloesener>

5.4.5.3 Access

Bus: Numbers 4, 25, 26, 30, 48, 64, 65, 248, E20 et 377..

Train: The name of the station is "Pont de Seraing", and it takes less than 10 minutes by foot.

Parking: The campus is equipped with a parking for bicycles.



5.4.6 Campus La Reid

5.4.6.1 Studies

- Department of « Agronomic Sciences »

5.4.6.2 Location

Rue Haftay, 21 – 4910 La Reid - <https://www.hepl.be/fr/campus/la-reid>



5.4.6.3 Access

Bus: Number 388 from Verviers and 465 from Aywaille.

Train: The names of the stations are "Theux", "Spa" and "Aywaille".

5.4.7 Campus Parc des marêts – Seraing

5.4.7.1 Studies

- Department of "Sciences and Techniques"

5.4.7.2 Location

Rue Peetermans, 80 – 4100 Seraing - <https://www.hepl.be/fr/campus/parc-marets>



5.4.7.3 Access

Bus : Numbers 2, 9, 15, 27, 32, 40, 41, 46, 47, 94 et 111.

Train: The name of the station is "Seraing".



5.4.8 Campus Verviers

5.4.8.1 Studies

- Department of "Sciences and Techniques"

5.4.8.2 Location



Rue aux Laines, 21 – 4800 Verviers - <https://www.hepl.be/fr/campus/verviers>

5.4.8.3 Access

Bus : Numbers 69, 138, 288, 294, 295, 388, 390, 393, 395, 701, 702, 703, 705, 706, 707, 708, 709, 717, 724, 725, 727, 738 et E21.

Train : The name of the station is « Verviers ».



5.4.9 Site Avroy – Liège

5.4.9.1 Studies

- Department of "Social Sciences and Communication"

5.4.9.2 Location



Boulevard d'Avroy, 61 – 4000 Liège - <https://www.hepl.be/fr/campus/site-avroy>

5.4.9.3 Access

Bus : Numbers 1, 4, 20, 21, 22, 23, 64, 65, 94 et 377. The name of the stop is "Darchis ».

Train: The name of the station is « Liège-Carré » (10 minutes by foot) or « Liège Saint-Lambert (20 minutes by foot).

5.5 Disability services

HEPL wants to be attentive to students with disabilities. In 2014, it set up an Inclusion service to encourage the implementation of measures and resources intended to support these students.

Some examples of what we mean by physical, mental, intellectual or sensory disabilities:

- Learning and speech disorder
- Attention deficit disorder with/without hyperactivity
- Visual impairment
- Hearing impairment
- Motor impairment
- Organic and/or degenerative disease
- Mental health problem
- Autism spectrum disorder

Please contact your coordinator in HEPL if you are concerned about this service.



5.6 Erasmus House

5.6.1 Contact and registration

Pauline BACQUELAINE – pauline.bacquelaine@hepl.be

You have to register near Miss Bacquelaine and follow the procedure she will send you. The room will be assigned after confirmation of available places.

360° view of the Erasmus House:

<https://static01.provincedeliege.be/hepl-campus/Maison-Erasmus/>

5.6.2 Arrival at Erasmus House

Fall semester: Between 2nd and 6th of September, or on 9th of September (between 9:00am and 4:00pm)

Spring semester: Monday 3rd of February (between 9:00am and 4:00pm)

5.6.3 Location

The HEPL has a building comprised of 31 rooms (including one equipped for a Person with Reduced Mobility) to accommodate Erasmus students.

You will reside in Jemeppe (Seraing), just next to Campus 2000 (where the trainings of the economic, educational and social faculties take place):

- 200 m from bus and train stations,
- 300 m from food stores,
- 10 km from the center of Liège and 100 km from Brussels.

Note: The International Relations Office is on the ground floor of the building.

5.6.4 Equipment

On 2 floors, the rooms (11 m²) consist of basic furniture (bed, desk, wardrobes), a shower, a sink and a toilet.

Each room has an internet connection.

5.6.5 Communal areas

A whole floor includes an equipped shared kitchen, a dining room, a large room for relaxation and study, terraces (including a vegetated one). In addition, this floor has WIFI. In the basement, a laundry room (automatic machine, electric dryer, ironing board and iron) is available to students.



5.6.6 Costs and rooms

5.6.6.1 Single Room

- Installment: 240€/month
- Deposit: 250€

5.6.6.2 Single Room with shared bathroom

- Installment: 220€/month
- Deposit: 250€

5.7 Wifi

Anyone who is a member of an institution that is part of the eduroam project can access the eduroam Wi-Fi network using their usual credentials such as `identfier@institution`. In the case of HEPL: identfier@hepl.be.

5.8 ESN HEPL



Erasmus Student Network or ESN is a European-wide student organization whose aim is to welcome and integrate international students during an Erasmus-type exchange as well as to promote international mobility.

Email: esn.hepl@gmail.com

You can buy the ESN Card near an ESN member. The ESNcard is also used as a discount card in many cities and countries around Europe.



5.9 Sport

Students have access to sports for free.



5.10 Contact

5.10.1 Department of « Agronomic Sciences »

Jean-François Michaux: International Relations Manager for the Department of "Agronomic Sciences"

Adresse : Campus La Reid

Rue du Haftay, 21 – 4910 La Reid

Jean-francois.michaux@hepl.be



5.10.2 Department of "Health Sciences"

Maryline Kapupela: (Nursing, Midwife, Oral hygienist, Audiology, Speech therapy, Orthoptist): International Relations Manager for the Department of "Health Sciences"

maryline.kapepulabinyangie@hepl.be

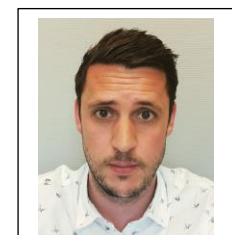


Lionel Hoebeke: (Medical Imaging Technologist, Medical laboratory technologist, Dietetic)

lionel.hoebeke@hepl.be

Adresse : Quai du Barbou, 2 – 4000 Liège

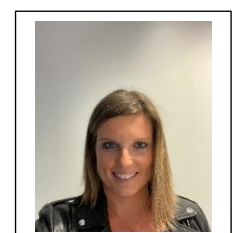
+324/279.79.25



5.10.3 Department of "Motricity Sciences"

Justine Malempré: International Relations Manager for the Department of "Motricity Sciences"

Justine.malempré@hepl.be





Adresse : Quai du Barbou, 2 – 4020 Liège

+324/279.79.25

5.10.4 Department of "Sciences and Techniques"

Thibaut Lamoureux: International Relations Manager for the Department of "Sciences and Techniques"

Thibaut.lamoureux@hepl.be

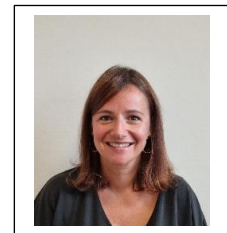


Adresse: Room 280 - Quai Gloesener, 6 – 4020 Liège

+324/279.63.71

5.10.5 Department of "Economic and Legal Sciences"

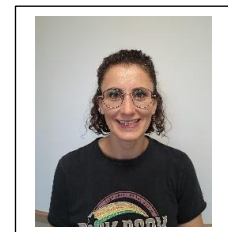
Amélie Louwette (International Business, Facility Management, International Cooperation, Sales Management and Logistics) – amelie.louwette@hepl.be



Melissa Lupica (Accounting, Marketing, Law, E-business, Public Administration) – melissa.lupica@hepl.be

International Relations Managers for the Department of "Economic and Legal Sciences"

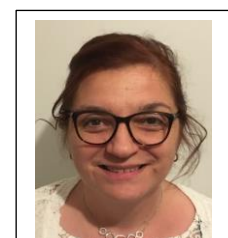
Adresse: Campus Carmes – 2nd floor



5.10.6 Department of "Psychological Sciences and Education"

Natacha Martynow: International Relations Manager for the Department of "Psychological Sciences and Education" – natacha.martynow@hepl.be

Adresse: Campus Beeckman

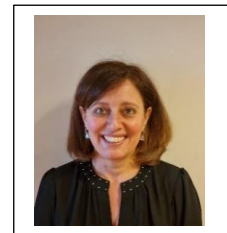




5.10.7 [Department of "Social Sciences and Communication"](#)

Brigitte Plescia: brigitte.plescia@hepl.be : International Relations Manager for the Department of "Social Sciences and Communication"

Adresse : Campus Carmes – 2nd floor



5.10.8 [Central Office](#)

Pauline Bacquelaine: Administrative and Economic Head of International Office - Pauline.bacquelaine@provincedeliege.be - Pauline.bacquelaine@hepl.be +324/279.55.76



Morgane Lamoureux: Relationship and Strategic Head of International Office

Morgane.lamoureux@provincedeliege.be - Morgane.lamoureux@hepl.be

+324/279.55.74

Adresse: located on the groundfloor at Erasmus House

Quai des carmes, 45 - 4101 Jemeppe-sur-Meuse.

bri@hepl.be

+324/279.74.95



FB : International Relations Office : BRI HEPL



FB : ESN : ESN HEPL

Instagram : Bri HEPL

Instagram : Esn.hepl

6 Living in Liège

6.1 Liège

Liège lives over the water. 18 bridges (of which the famous « Pont de Fragnée » and « Pont de Kinkempois », are true masterpieces) span the river « La Meuse » or its diversion. At the heart of the town, a marina welcomes boats and private barges. Liège Airport is the 8th European cargo airport. The port of Liège is also a hub for river freight. The new station which welcomes the T.G.V, is the work of the world-famous architect Santiago Calatrava.

The « Standard », Liege football team, whose training ground is few kilometers away from HEPL, hosting matches in the first division in a charged atmosphere. For more information: <https://www.visitezliege.be/en> (Tourism Office of Liege).



Picture : Jean Pierre Ers @ville de Liège - See in : <https://www.liege.be/fr/decouvrir/plein-air/au-fil-de-leau/le-port-des-yachts/galerie-le-port-des-yachts/port-de-plaisance.jpg/view>



⁴ Picture: Today in Liège - See in: <https://www.todayinliege.be/la-verriere-de-la-gare-des-quillemins-en-couleurs-pendant-un-an-une-oeuvre-a-un-demi-million-deuros/>

⁵ Picture: Pierre Blaché - See in: https://fr.wikipedia.org/wiki/Pont_de_Fragne%C3%A9e

6.2 Visas

Citizens from non-EU countries who wish to stay in Belgium for more than 90 days may need to obtain a residence visa before their arrival.

On this page you will find the addresses of Belgian embassies and consulates abroad, as well as the addresses of foreign embassies and consulates in Belgium.

<https://diplomatie.belgium.be/en/embassies-and-consulates>



6.3 Housing

In Liège, there are many accommodation options for students. Please find here some possibilities among others.

- Youth Hostel Georges Simenon – Rue Georges Simenon, 2 Liège - <https://lesaubergesdejeunesse.be/en/liege-youth-hostel>
- Youth Hostel and Yust Hotel – Esplanade Simone Veil 4000 Liège - <https://www.yust.com/fr/liege/>
- Xior Student Housing – Boulevard d’Avroy 67 4000 Liège - <https://www.xior.be/fr/chambre/582/avroy-student-house>
- Generation Campus – Place du XX août 4000 Liège - <https://www.generation-campus.be/fr/studio-liege.php>
- Student Station – Rue Pouplin 6 4000 Liège - <https://www.studentstation.be/>
- L’Uni Campus – Rue de l’université 30 4000 Liège - <https://www.luniliege.be/>
- Chick and Kot - <https://www.chickandkot.be/>
- House Sharing - <https://www.appartager.be/>
- Co-living - <https://jobappart.be/>
- Guest House - <https://www.bnbliege.com/fr/>
- Different websites:
 - o Kot à Liège : <https://www.kotaliege.be/>
 - o Sypra : <https://www.sypra.be/>
 - o Immoweb : <https://www.immoweb.be/en>
 - o Student.be: <https://www.student.be/fr/kots-a-louer/>
 - o Kot House: <http://www.kothouse.be/logements/>
 - o Kots : <https://kots.be/ou-koter-en-belgique/kots-a-liege/>



- Skot : <https://skot.be/fr/>
- Ikot : <https://ikot.be/>
- Immo VMI : <http://immovmi.be/fr/>
- Great Kot: <https://greatkot.be/>

6.4 Health Insurance and Health Care

Check whether you dispose of an internationally valid healthcare insurance. Be aware that valid healthcare insurance is mandatory in Belgium.

If you come from a **European country**, you are insured by your national insurance system. Upon your request your healthcare insurance company in your home country will provide you with a European Health Insurance Card (CEAM).



This is valid for one-year maximum. An 'all inclusive' mobility insurance can also be subscribed with a private insurance company to obtain a refund of all incurred expenses.

If you come from a **non-European country**, you must have a healthcare insurance policy to reside in Belgium.

Some insurance companies offer additional policies that cover hospitalization and other medical expenses, repatriation, illness or accidents that occur during your stay abroad.

6.5 Mobile phone service

The major mobile telephone companies in Belgium are Proximus, Base, Scarlet and Orange. You can easily buy a SIM card with a local call number and small communication credit in a mobile phone shop. The cards to reload your communication credit can be bought in the same shops, but also in supermarkets, newsagents, etc.





6.6 Opening a bank account

The Euro (€) is the currency used in Belgium. Numerous ATMs are at your disposal (Bancontact/Mister Cash, Visa, Mastercard, Maestro, etc.). They generally work with most credit and debit cards

If you open a bank account in Belgium upon your arrival, you will need to submit following documents:

- identity card or passport;
- your address in Belgium;
- A host institution's enrolment certificate.

Some banks allow you to open free online accounts.

- <https://www.hellobank.be/home>
- <https://www.ing.be/en/individuals/daily-banking/free-bank-account>
- <https://www.bnpparibasfortis.be/public/fr/public/particuliers/banque-au-quotidien/comptes-bancaires/compte-a-vue/compte-a-vue-gratuit>

6.7 Shopping for food and groceries

The many shopping centers gather many different types of shops and services. Usual opening times are from 10 am to 6 pm, from Monday till Friday or Saturday. Shops and services are closed on Sunday. Whole areas abound with restaurants serving different cuisines: all the countries of the world are represented.

Some beautiful places to shop in Liège: <https://www.visitezliege.be/fr/page/liege-shopping>

6.8 Monthly budget

When considering a mobility experience, it is important to know the cost of living in the city. This is why the Erasmus+ application offers a cost-of-living calculator based on the monthly expenses communicated by other students.

Erasmus app : <https://erasmusapp.eu/living-cost:fr>

We also recommend to surf on this website.

Erasmus Play: [https://erasmusplay.com/fr/liege/erasmus-in-liege.html#:~:text=Co%C3%BBt%20de%20la%20vie%20%C3%A0%20Li%C3%A8ge%2C%20Belgique&text=Un%20%C3%A9tudiant%20peut%20s'attendre,nourriture%2C%20transport%20et%20loisirs\).](https://erasmusplay.com/fr/liege/erasmus-in-liege.html#:~:text=Co%C3%BBt%20de%20la%20vie%20%C3%A0%20Li%C3%A8ge%2C%20Belgique&text=Un%20%C3%A9tudiant%20peut%20s'attendre,nourriture%2C%20transport%20et%20loisirs).)



6.9 Transportation

6.9.1 Bus

You can order your season ticket on the website of "Le TEC" (<https://www.letec.be/>) or go to one of the sale points:

- TEC Guillemins: inside the station, Place des Guillemins 4000 Liège ;
- TEC Saint-Lambert, Place Saint Lambert 4000 Liège
- TEC Jemeppe-sur-Meuse : Rue Gustave Baivy, 152 4101 Jemeppe-sur-Meuse

It is recommended to download the app' to have information on real time.



6.9.2 Bike

You can rent bikes from 1 day to 1 year. All the information can be found on the website "Pro Vélo": <https://www.provelo.org/en/>

6.9.3 Train

In Belgium, the SNCB is the manager of the railway network. You will find all the information about the trains here: <https://www.belgiantrain.be/en>

It is also recommended to download the app' to have information on real time.





6.9.4 Boat

From March 31 to November 4, you can travel to Liège with the river shuttle. There are 5 stops spread across the city between the city center and the Fragnée district.



6.9.5 Carpooling

There are many websites that allow carpooling. Here is a non-exhaustive list:

- Blablacar: <https://www.fr.blablacar.be/>
- Mpact – Carpool: <https://www.carpool.be/en>
- Karzoo: <https://www.karzoo.be/>

6.10 Traveling outside of Liège

Belgium is located in the heart of Europe and allows you to visit the major capitals in a short time.

London is 2 hours by train from Brussels, Paris is 1 hour 30 minutes by train, Amsterdam is 2 hours 30 minutes from Brussels.

Ryanair which is a low-cost company (<https://www.ryanair.com/be/fr>) serves many European cities from Charleroi or Brussels.

6.11 Culture in Liège

Liège has an extremely rich and varied museum offer: masterpieces of architectural and decorative arts, plastic, pictorial and musical arts, natural heritage, traces of past life, street art parkour.

<https://www.visitezliege.be/en/page/best-of-art-et-culture>